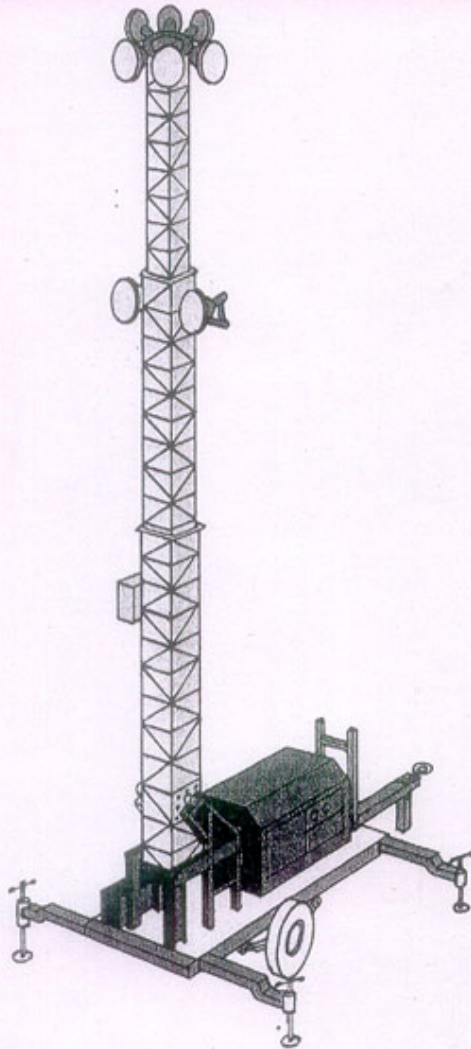




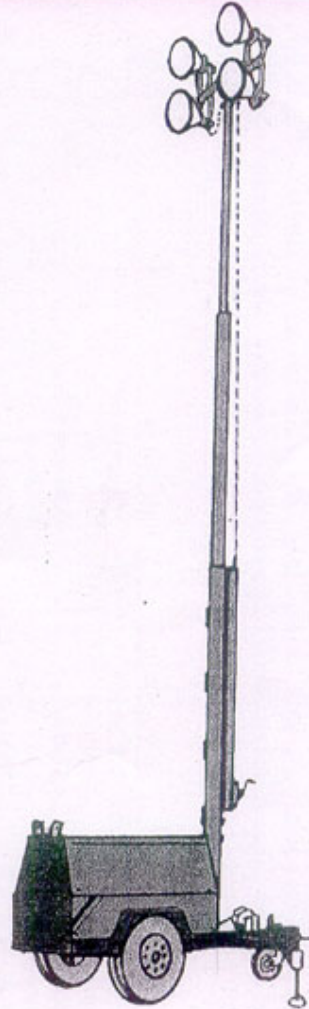
MOBILE LIGHT TOWERS

Telescopic Lift

SINCE 1980



HEAVY DUTY
Model: HMLT-9 & HMLT-15



LIGHT DUTY
Model: LMLT - 3,5,7,9

BHASKARA Group
Recognised for Innovative Products

**BHASKARA
ADVANCED
AUTOMATION**
Bangalore - 560 010, INDIA

MOBILE LIGHT TOWER

MODELS: MLT - 9 ASS (Acoustic & Self Start)

MLT - 9 SS (Self Start)

MLT - 9 M (Manual)

SYSTEM DESCRIPTION

These lighting towers are designed with rugged constructions and more reliability to suit India, site conditions. These equipments should be towed to the site by a driven vehicle. This device can be used for illumination purpose in the night and as well as welding in day. This can be erected and started at site easily by a single person. The trailer on which lights mounted is designed to withstand any rough transport and terrains for long lasting use. The electrical controls are interlocked with the operations. Emergency lights are provided to use in the dark before starting it.

TECHNICAL SPECIFICATIONS

MODELS	MLT-9ASS	MLT-9 SS	MLT-9 M
Type Telescopic	: Acoustic & self start	: Self start	: Manual start
Max. Tower Height with lights	: 9000mm	: 9000mm	: 9000mm
Overall Length(Lowered with luminaries):	: 5500 mm	: 5500mm	: 5500mm
Overall Height (During elevated)	: 9000mm	: 9000mm	: 9000mm
Overall Height (During non elevated)	: 2200mm	: 2200mm	: 2200mm
Overall Width	: 1500mm	: 1500mm	: 1500mm
Supports Points - Side Stabilizer / jacks	: 3 Nos.	: 3 Nos.	: 3 Nos.
Wind Stability with DG mph / kph	: 65 / 105	: 65 / 105	: 65 / 105
Ground Clearance (approx)	: 350 mm	: 350 mm	: 350mm
Tyres 2 Nos. & size	: 6" x 16"	: 6" x 16"	: 6" x 16"
Manual Winch For Mast Raising	: 500 Kgs	: 500 Kgs	: 500 Kgs
Manual Winch For Mast Titting	: 1000 Kgs	: 1000 Kgs	: 1000 Kgs
Winch Rope Wire	: 5 dia / 8 dia	: 5 dia / 8 dia	: 5 dia / 8 dia
Fuel Tank Capacity Ltrs.	: 50 Ltrs	: 50 Ltrs	: 50 Ltrs
Diesel Consumption	: 1.2 Ltrs / Hr.	: 1.2 Ltrs / Hr.	: 1.2 Ltrs / Hr.
Run Time, ¼ Load	: 40 Hrs.	: 40 Hrs.	: 40 Hrs.
Engine Make - Air Cooled/Water Cooled	: Kirloskar (Swaraj)	: Kirloskar (Swaraj)	: Kirloskar (Swaraj)
Engine capacity -	: 5 KVA (10BHP)	: 5 KVA (10BHP)	: 5 KVA (10BHP)
Power Out Put	: 1Phase, 230 V	: 1Phase, 230 V	: 1Phase, 230V
No of Cylinders	: 1	: 1	: 1
No of Strokes	: 4	: 4	: 4
Engine RPM	: 1500	: 1500	: 1500
Flood Lights (HPSV /Halogen)	: 4 x 400 Watts	: 4 x 400 Watts	: 4 x 400 Watts
Lumens	: 1,60,000	: 1,60,000	: 1,60,000
Total Weight - approx	: 1600 Kgs.	: 1600 Kgs.	: 1600 Kgs.

Designed Manufactured & Marketed by **We can also supply Custom Built Mobile Lighting Tower to any height to suite your applications**

BHASKARA ADVANCED AUTOMATION

Office : No.29, II Floor, Srinath Building, 7th Main Road, Sriramuram, Bangalore, - 560 021
 Telefax : 080 23420558, Cell : 98863 30317, Email: info@baaindia.com,
 Web: www.baaindia.com
 Factory : No.501, 4th Cross, 10th Main, 4th 'C' Phase, Peenya Industrial Area, Bangalore - 560058
 Telefax : 080 - 28367096
 Karnataka, India . Ph : 080 23421241, Cell : 9886186709

Customers List

M/s.Hubli Dharwad Municipal Corporation, Hubli
 M/s.Accurate Instruments & Electricals, Daman
 M/s. Asian Electricals, Vapi
 M/s. Nazlog Marketing, Durg
 M/s. Surana Sales, Chattisgarh
 M/s. Bangalore Mahanagara Palike
 M/s. Mysore Mahanagara Palike
 M/s. Sri Balaji Power Systems, Bangalore
 M/s. N.H. Traders, Daman

